



83 Majestic Apartments, Onchan, Isle of Man, IM3 2BD
Asking Price £425,000



- **Luxury First-Floor Apartment In Prestigious Gated Coastal Development**
- **Two En-Suite Double Bedrooms With Luxury Walk-In Wardrobe**
- **Two Large Balconies with Sea Views from the Main Balcony**
- **Newly Fitted Electric Heating And Double-Glazed Windows**
- **Elegant Open-Plan Lounge, Kitchen, And Dining Area**
- **Double Garage And Private Parking Within Secure Grounds**

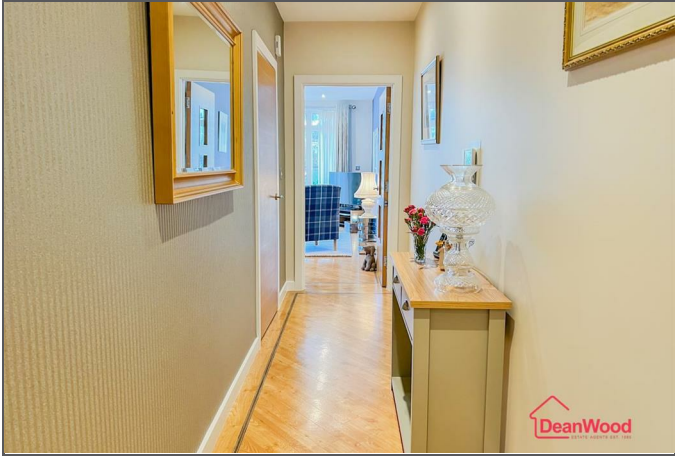


83 Majestic Apartments, Onchan, Isle of Man, IM3 2BD

Located within one of the Isle of Man's most prestigious gated coastal developments, this stunning first-floor luxury apartment offers an exceptional standard of modern living with breathtaking sea views. Beautifully finished and superbly appointed throughout, the property combines elegance, comfort, and functionality in every detail. The spacious open-plan lounge, kitchen, and dining area form the heart of the home — a bright, airy space with access to a large private balcony where you can relax and enjoy the coastal outlook. The kitchen is fitted with stylish contemporary units and integrated appliances, complemented by tasteful décor and high-quality fixtures and fittings throughout. There are two generous double bedrooms, each benefiting from its own en-suite bathroom for added privacy and convenience. The principal suite also features a luxury walk-in wardrobe and access to a second private balcony, perfect for morning coffee or evening sunsets. Further accommodation includes a practical utility/plant room, ideal for laundry and additional storage. The apartment has been enhanced with electric central heating and up to date double-glazed windows and balcony doors, ensuring energy efficiency and comfort all year round. Externally, the property boasts a double garage with an electric door and a private parking space to the front, providing secure and convenient parking. Residents enjoy the peace of mind of living within a gated community, known for its exclusivity, quality, and proximity to beautiful coastal walks. This exceptional property offers the perfect blend of luxury, location, and lifestyle. Internal inspection is highly recommended to fully appreciate the quality of finish, spacious layout, and stunning sea views on offer.







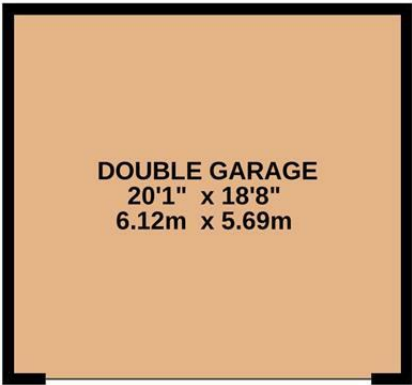




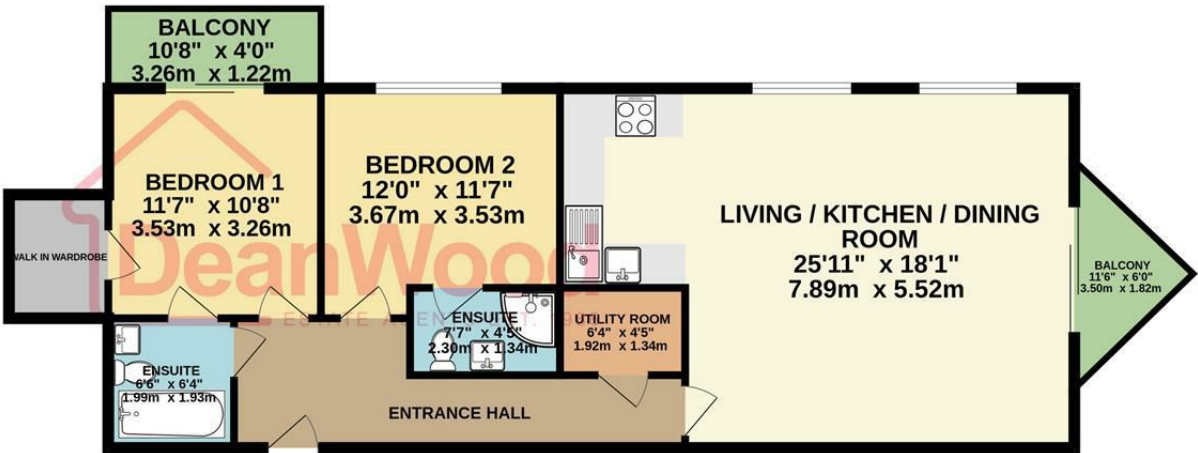




GROUND FLOOR
375 sq.ft. (34.8 sq.m.) approx.



FIRST FLOOR
912 sq.ft. (84.7 sq.m.) approx.



TOTAL FLOOR AREA : 1287 sq.ft. (119.5 sq.m.) approx.
Not to scale-for identification purposes only
Made with Metropix ©2025



DOUGLAS
37 VICTORIA STREET
DOUGLAS
ISLE OF MAN IM1 2LF
T 01624 620606
F 01624 677363
E info@deanwood.co.im

CASTLETOWN
COMPTON HOUSE
9 CASTLE STREET CASTLETOWN
ISLE OF MAN IM9 1LF
T 01624 825995
F 01624 825996
E castletown@deanwood.co.im

RAMSEY
LEZAYRE HOUSE
87 PARLIAMENT STREET
RAMSEY ISLE OF MAN IM8 1AQ
T 01624 816111
F 01624 816588
E ramsey@deanwood.co.im

These particulars are for information purposes only. They do not constitute or form any contract nor should any statement contained herein be relied upon as a representation of fact. Neither the vendor nor DeanWood Agencies Limited ('the firm'), nor any officer or employee of the firm accept liability or responsibility for any statement contained herein. The vendor does not by these particulars, nor does the firm, nor does any officer or any employee of the firm have any authority to make or give any representation or warranty whatsoever as regards the property or otherwise. It is the sole responsibility of any person interested in the property described in these particulars to make all proper enquiries and searches to verify the description of the property and all other particulars herein.

FOR MORE PROPERTIES VISIT OUR WEBSITE @ **deanwood.im**